

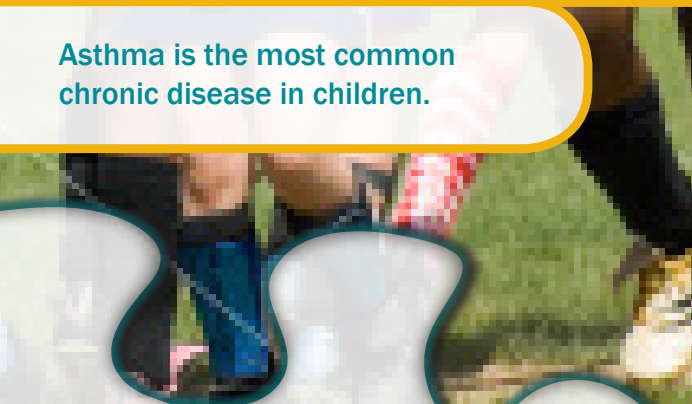
Asthma affects over 20 million patients in the United States.

Annual health care costs for asthma are estimated at \$18 billion.



Asthma is the leading cause of school absenteeism.

Asthma is the most common chronic disease in children.



Sources:
National Health Interview Survey 2005;
National Center for Health Statistics,
Centers for Disease Control and Prevention 2005; EPR 3

The **Asthma Management Program** is available through the Health Improvement Department of Children's Mercy Family Health Partners. For more information on other available disease management programs, please contact us at **1-800-347-9363**.



Children's Mercy
FAMILY HEALTH PARTNERS
www.fhp.org

We bring it all together for you.

revised 02/2008

KS approved 00/00/00 MO approved 00/00/00

Asthma Management Program

CMFHP Health Improvement



Children's Mercy
FAMILY HEALTH PARTNERS
www.fhp.org

Asthma is a major public health problem that has been increasing in frequency over the last several decades. There is an urgent need to implement programs based on sound research to control and prevent it.

Richard J. Jackson, MD
Director, CDC's National Center for Environmental Health

The Puzzle

Asthma attacks interfere with daily activities, including school and work. Among those who reported at least one asthma attack in the previous year:

- Children 5-17 years of age missed 14.7 million school days due to asthma
- Adults 18 years of age and older who were currently employed missed 11.8 million work days due to asthma.

With education, proper diagnosis and a good asthma management plan, asthma can be controlled.

The **Asthma Management Program** creates a unique partnership between the health plan, the providers and the patient. It places asthma management where it is needed most – with the provider and the patient. The mission of the program is to empower providers and their staff to manage their patients with asthma with emphasis on:

- Use of evidence-based guidelines
- Prevention of acute asthma episodes
- Patient self-management skills
- Improved patient health status
- Improved management of health care utilization



The Solution

Primary Care Providers (PCPs) are the first line of interaction for members with asthma. The **Asthma Management Program** encourages PCP participation by bringing the program to their office.

Our certified community asthma educators work with the staff in each office to build a high-quality, comprehensive asthma program that fits within the culture of the individual practice.

Once an office-based program is initiated, the staff receives the resources they need to implement the asthma management program. These include:

- A spirometer to use during program intervention
- Asthma Action Plans
- Educational handouts
- Reimbursement for patient asthma education
- Ongoing program evaluation and education

Program Features

- Identification of Children's Mercy Family Health Partners members with asthma
- Comprehensive asthma education and empowerment for patients, providers and staff
- Individual patient interaction with Health Coaches
- Evidence-based Asthma Action Plans
- Tracking of patient utilization
- Targeted environmental assessment
- Reimbursement for patient asthma education
- Certified by the Joint Commission



How to Participate

For more information about this exciting asthma program, contact:

Candace Ramos, RRT, AE-C
Education Coordinator, Asthma Program
Email: cramos@fhp.org
Phone: (816) 559-9346
Fax (816) 462-1206